



Community
Insights

Data Resources



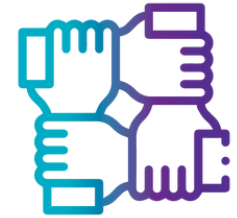
Bay of Plenty



Child / Youth



Disability



Diversity



Economic Prosperity



General Stats



Health



Housing



Māori



Older People



Safety / Harm



Social Sector



Tauranga & WBOP Local Census Data (2018) Dashboards	Compiled by Community Insights, Tauranga & WBOP Local Census Data (2018) Dashboards present population-based statistics from the most recent census data, localized to BOP communities.
Regional Economic Activity Web Tool (MBIE)	Explores indicators by Region and Territorial Authority on wide range of indicators including on housing, workforce, social and income, education, population, agriculture, economic and tourism.
Whakahou Taketake Vital Update – Tauranga 2023	The findings from a 2020 survey of 5222 residents that focuses on the geographic communities in Tauranga: who makes them up, and what their needs, wants and aspirations are for their neighbourhoods and the wider city.
WBoP Homelessness and Housing Dashboards	The dashboards provide a one-stop-shop platform to support our local information needs on everything housing related – from homelessness to emergency housing, to social housing and supported living, to market renting, through to home ownership.
WBOP Regional Economic Profile (Infometrics)	The Regional Economic Profile covers a wide range of topics including GDP, employment, unemployment, productivity, standard of living, population, wellbeing, skills, businesses, and tourism.
Tauranga Regional Economic Profile (Infometrics)	The Regional Economic Profile covers a wide range of topics including GDP, employment, unemployment, productivity, standard of living, population, wellbeing, skills, businesses, and tourism.
Infometrics Quarterly Economic Monitor - BOP Region	The Quarterly Economic Monitor (QEM) provides finger-on-the-pulse insights into how your local economy has performed over the previous quarter with expert commentary from Infometrics’ regional economists and a range of economic indicators.
Tauranga City Statistical Information Report 2023	Tauranga City Council compiled the information in this report from the statistics produced by Statistics New Zealand, the 2006, 2013 and 2018 Census, Council data and a few other sources. TCC updates this report regularly to include the most recent information when available.
SmartGrowth Regional Data Trends	SmartGrowth has developed a set of digital dashboards to monitor data across housing, movement, environment, and prosperity. The dashboards track how the wBOP sub-region is changing and provides data about the effectiveness of interventions.
Te Kāhui Māngai (Directory of Iwi and Māori Organisations)	Te Kāhui Māngai provides basic information about iwi, hapū and marae. It gives information on iwi identified in the Māori Fisheries Act 2004, and those iwi/hapū that have begun the process of negotiating settlement of their historical Treaty of Waitangi claims; including their rohe, hapū, marae, and the organisations whose mandates to represent these iwi/hapū have been recognised by the New Zealand Government.
BOP Regional Environmental Data	BOP Regional Council environmental data portal provides access to a range of current and historical environmental data.
Whakahou Taketake Vital Update – Tauranga 2020	The findings from a 2020 survey of residents that focuses on the geographic communities in Tauranga: who makes them up, and what their needs, wants and aspirations are for their neighbourhoods and the wider city.
Census Place Summaries (Statistics New Zealand)	Find 2018 Census data about Bay of Plenty Region. Topics include population, ethnicity, religion, health, employment, income, education, and housing.



<p>Child & Youth Wellbeing Dashboards</p>	<p>Compiled by Community Insights, the Child & Youth Wellbeing Dashboards are divided into four main themes. The combination of these datasets from the Ministry of Health, Statistics New Zealand and Education Counts provide detailed interactive data about children and young people in our local community.</p>
<p>Education Counts</p>	<p>A collection of analytical dashboards from across the education sector which allow users to analyse data to investigate trends and predict outcomes.</p>
<p>Te Mataaho-a-Iwi Education Dashboard</p>	<p>Naku te rourou nau te rourou ka ora ai te iwi With my food basket and your food basket the people will live. This dashboard provides iwi with a selection of summary statistics about their ākonga.</p>
<p>Aotearoa Youth Figures</p>	<p>Find data for and about young people in Aotearoa. Improve wellbeing through better, data-informed decisions.</p>
<p>OHI Data Navigator</p>	<p>A free interactive digital tool which draws on government and community data e.g. how young people living in a particular area are faring in areas like education, health, housing, income, and employment. It can also tell us how often these rangatahi are interacting with protective services or the justice system and much more.</p>
<p>Ministry of Youth Development</p>	<p>Links to a range of resources, reports and data for young people.</p>
<p>Child Poverty Action Group Current Statistics on Child Poverty</p>	<p>Current statistics on Child Poverty.</p>
<p>Maternity Web Tool</p>	<p>This web tool from Te Whatu Ora presents maternity data from the National Maternity Collection and is the latest release in the Maternity and newborn data series. It provides annual health statistics about women giving birth, their pregnancy and childbirth experience and the characteristics of live-born babies in New Zealand between 2012 and 2021.</p>



Disability Resources



<p>Aotearoa Disability Figures</p>	<p>Aotearoa Disability Figures brings together data, research and reports for disabled people in Aotearoa. Find data on disabled people's wellbeing, employment, housing, education, health, and more.</p>
<p>Disability Data and Evidence Resources</p>	<p>The extensive resources have been put together by the Disability Data and Evidence Working Group and are hosted by the Office for Disability Issues Te Tari Mō Ngā TakeHauātanga.</p>



<p>Ethnic Communities Data Dashboard</p>	<p>Created in partnership with Statistics New Zealand, the Ethnic Communities Data Dashboard is an interactive tool that allows you to access information on ethnic communities in Aotearoa New Zealand. You can use it to create comprehensive information on ethnicity, religion, and language – at national and regional levels.</p>
<p>LGBT+ Household Economy</p>	<p>The Household Economic Survey (HES) year ended June 2020 was the first time that it collected data about New Zealanders' gender and sexual identify.</p>
<p>LGBT+ General Social Data</p>	<p>The 2018 General Social Survey (GSS) collected for the first time, wellbeing data for people of different sexual identities.</p>
<p>Pacific People's Wellbeing</p>	<p>Explores the key values, beliefs and practices that shape Pacific New Zealanders' experience of wellbeing and provides information about how Pacific people in New Zealand are faring across a range of wellbeing domains.</p>
<p>Pacific Data Fale o Aotearoa</p>	<p>Pacific Data Fale o Aotearoa brings together data, research and reports on Pacific people in Aotearoa. Find data on Pacific health, education, wellbeing, and more. Read reports that contain data about Pacific people in NZ, Pacific data sovereignty, and other topics. We've also gathered a list of Pacific data experts and researchers to help give important context to data.</p>
<p>Pacific Health Data</p>	<p>Statistical publications and data sets on Pacific health.</p>



<p>Ministry of Social Development Data</p>	<p>On-line data tool on income support - assistance type/subtype and region (including main benefits, supplementary support & social housing register).</p>
<p>Child Poverty Action Group Current Statistics on Child Poverty</p>	<p>Current Statistics on Child Poverty.</p>
<p>Socioeconomic Deprivation</p>	<p>Analysis of census 2018 variables provides information about Aotearoa's socioeconomic landscape/map using the measurement tool NZDep2018.</p>
<p>Regional Economic Activity Web Tool (MBIE)</p>	<p>Explores indicators by Region and Territorial Authority on a wide range of indicators including housing, workforce, social and income, education, population, agriculture, economic and tourism.</p>
<p>WBOP Regional Economic Profile (Infometrics)</p>	<p>The Regional Economic Profile covers a wide range of topics including GDP, employment, unemployment, productivity, standard of living, population, wellbeing, skills, businesses, and tourism</p>
<p>Tauranga Regional Economic Profile (Infometrics)</p>	<p>The Regional Economic Profile covers a wide range of topics including GDP, employment, unemployment, productivity, standard of living, population, wellbeing, skills, businesses, and tourism</p>
<p>Infometrics Quarterly Economic Monitor - BOP Region</p>	<p>The Quarterly Economic Monitor (QEM) provides finger-on-the-pulse insights into how your local economy has performed over the previous quarter with expert commentary from Infometrics' regional economists and a range of economic indicators.</p>



<p>The Social Wellbeing Agency Data Explorer Tool</p>	<p>The Social Wellbeing Agency has developed a new explorer tool to assist with the response and recovery from adverse weather events.</p>
<p>Census 2023</p>	<p>Infographics showing 2023 Census national and regional data</p>
<p>Census 2023: Subnational (local) Data Counts</p>	<p>The initial data releases include: Usually resident population counts (by ethnic group, age and Māori Descent) and dwelling counts. NB. To download local (Tauranga and Western Bay of Plenty) data look at tables “by Territorial Authority” (Tables 2, 5, 8 and 15) in the Excel spreadsheet available on this page.</p>
<p>Figure NZ</p>	<p>Find and use figures about our country for free.</p>
<p>Tauranga City Statistical Information Report 2023</p>	<p>Tauranga City Council compiled the information in this report from the statistics produced by Statistics New Zealand, the 2006, 2013 and 2018 Census, Council data and a few other sources. TCC updates this report regularly to include the most recent information when available</p>
<p>Social Vulnerability Indicators</p>	<p>These indicators (developed by Environmental Health Intelligence NZ, a unit of Massey University) help identify population groups and geographic areas with people who are more vulnerable to the negative impacts of natural hazards (e.g. floods and earthquakes), pandemics and other health emergencies. The indicators can be used to inform planning, response and recovery.</p>

National Health Datasets and Visualisations	Te Whatu Ora (Health NZ) data and statistics on mortality, suicide, maternity, cancer, mental health, hospital events, diabetes and Pharmaceutical dispensings.
Mental Health & Addictions Service Use Web Tool	Presents data relating to specialist inpatient and community mental health and addiction services provided in Aotearoa New Zealand, some DHB level data.
New Zealand Health Survey Annual Data Explorer	The Data Explorer is an interactive tool for exploring NZ Health Survey Data, presenting the latest results (data collected from July 2022 to July 2023) by gender, age, ethnic group, disability status and neighbourhood deprivation, as well as changes over time.
Health Quality & Safety Commission NZ	Health system quality dashboard includes data on quality priorities, Maori Health Equity Report, Safety, Effectiveness and Patient Centred outcomes.
Māori Health Data	Statistical publications and data sets on Māori health.
Pacific Health Data	Statistical publications and data sets on Pacific health.
Aotearoa Disability Figures	Aotearoa Disability Figures brings together data, research and reports for disabled people in Aotearoa. Find data on disabled people's wellbeing, employment, housing, education, health, and more.
Social Vulnerability Indicators	These indicators (developed by Environmental Health Intelligence NZ, a unit of Massey University) help identify population groups and geographic areas with people who are more vulnerable to the negative impacts of natural hazards (e.g. floods and earthquakes), pandemics and other health emergencies. The indicators can be used to inform planning, response and recovery.
Disability Data & Evidence Resources	The extensive resources have been put together by the Disability Data and Evidence Working Group and are hosted by the Office for Disability Issues Te Tari Mō Ngā TakeHauātanga.
Auckland University Health Data Platform	The Health Data Platform curates data from the National Collections provided by Te Whatu Ora. They are also linked to other datasets (e.g. clinical trials, cohort studies etc). Detailed information is available about each dataset.
Maternity Web Tool	This web tool from Te Whatu Ora presents maternity data from the National Maternity Collection and is the latest release in the Maternity and newborn data series. It provides annual health statistics about women giving birth, their pregnancy and childbirth experience and the characteristics of live-born babies in New Zealand between 2012 and 2021.
Older People's Data Explorer	The Older People's data explorer has been developed to understand the size, scale and characteristics of older people experiencing vulnerability in health, housing, finance, social connection, and access.
Official COVID-19 Data (Ministry of Health)	Data and statistics related to COVID-19 in New Zealand including cases and testing rates.



WBoP Homelessness and Housing Dashboards	The dashboards provide a one-stop-shop platform to support our local information needs on everything housing related – from homelessness to emergency housing, to social housing and supported living, to market renting, through to home ownership.
Ministry of Housing and Urban Development	The Housing Dashboard is a single place to track progress of key parts of the Government’s housing programme.
Kāinga Ora Housing Statistics	Each quarter, Kāinga Ora publishes three sets of information on its managed housing stock, vacant properties and homes removed from service.
Stats NZ Housing Statistics	Statistics about housing include the number, size, affordability, and quality of homes in New Zealand
Te Pā Harakeke: Māori Housing and Wellbeing 2021	An overview of the intersections between housing and wellbeing for the Māori population of Aotearoa New Zealand.
Housing in Aotearoa: 2020	The Statistics NZ publication Housing in Aotearoa: 2020 brings together a range of housing information from official and government administrative statistics on housing.
Whenua Māori Visualisation Tool	Developed to help Māori land owners and managers find out more about the physical characteristics, constraints and potential of their whenua Māori. It combines up-to-date environmental and land resource data from Manaaki Whenua (Landcare Research) with the updated property and legal data from Māori Land Online (Ministry of Justice).
SmartGrowth Regional Data Trends	SmartGrowth has developed a set of digital dashboards to monitor data across housing, movement, environment, and prosperity. The dashboards track how the wBOP sub-region is changing and provides data about the effectiveness of interventions
Māori Land Court Pātaka Whenua	Pātaka Whenua is the online portal that holds the Māori Land Court electronic record, which includes minutes and orders. In Pātaka Whenua you can search and access Māori land information

Iwi Leaders Data Platform	Te Whata is a data platform tailored specifically by iwi for iwi. It is for iwi members, technicians and leaders – designers and users of data.
Māori Data Sovereignty Network	Advocates for Māori rights and interests in data to be protected as the world moves into an increasingly open data environment.
Te Mataaho-a-Iwi Education Dashboard	Naku te rourou nau te rourou ka ora ai te iwi With my food basket and your food basket the people will live. This dashboard provides iwi with a selection of summary statistics about their ākongā.
Pātaka Raraunga - Data for and about Māori	Improve Māori wellbeing through better, data-informed decisions.
Te Kāhui Māngai (Directory of Iwi and Māori Organisations)	Te Kāhui Māngai provides basic information about iwi, hapū and marae. It gives information on iwi identified in the Māori Fisheries Act 2004, and those iwi/hapū that have begun the process of negotiating settlement of their historical Treaty of Waitangi claims; including their rohe, hapū, marae, and the organisations whose mandates to represent these iwi/hapū have been recognised by the New Zealand Government.
Māori Land Court Pātaka Whenua	Pātaka Whenua is the online portal that holds the Māori Land Court electronic record, which includes minutes and orders. In Pātaka Whenua you can search and access Māori land information
Māori Health Data	Statistical publications and data sets on Māori health.
Māori Maps	Using the gateway of Māori maps, find your way to the tribal marae of Aotearoa New Zealand – through maps, photographs and digital links to Maori Land Court info.
Te Pā Harakeke: Māori Housing and Wellbeing 2021	An overview of the intersections between housing and wellbeing for the Māori population of Aotearoa New Zealand.
Wai 2575 Māori Health Trends Report	Shows changes of Māori health over the years 1990–2015, across a range of health-related indicators.
Whenua Māori Visualisation Tool	Developed to help Māori land owners and managers find out more about the physical characteristics, constraints and potential of their whenua Māori. It combines up-to-date environmental and land resource data from Manaaki Whenua (Landcare Research) with the updated property and legal data from Māori Land Online (Ministry of Justice).



Stats NZ - Older people	The statistics on this page give information about the population by age group, including information about older people (those aged 65+).
Te Tari Kaumātua - Office for Seniors	Resources and fact sheets on indicators of wellbeing of New Zealand older people, for use by community organisations.
Older People's Data Explorer	The Older People's data explorer has been developed to understand the size, scale and characteristics of older people experiencing vulnerability in health, housing, finance, social connection, and access.
Older People's Health Data and Stats	This information from Te Whatu Ora (Health NZ) provides facts and figures about the health of older people.



Police Data	Data on Criminal offending and victimisation, the policing of drugs and family violence.
Justice Statistics	Data and analysis related to the administration of the justice system - charges, convictions, offence types and court outcomes; processes and outcomes in both criminal and family courts; children and young people in the court and youth justice indicators. Also provides a link to data from annual NZ Crime and victims Survey.
NZ Crime & Victims Survey	The NZCVS collects information about New Zealanders' experience of crime. This new survey is run every year from 2018 asking 8,000 New Zealanders from all walks of life about their experiences.
Crime and Justice Stats (On Stats NZ Site)	The latest Information on prosecutions and convictions, types of sentences, and the number of people serving prison or community sentences. Statistics also include child and youth prosecution information.
Suicide Web Tool	Suicide data presented as trends over time, by age group, district health board of residence, ethnicity and sex.
Te Tari Taiwhenua Department of Internal Affairs	Department of Internal Affairs collated quarterly information about the numbers of venues and gaming machines licensed in each territorial authority area.
Pokie Grants Data	Discover whether your community benefits from Gaming Trust grants using this interactive tool.
Ministry of Transport Te Manatū Waka – Road Deaths	Annual statistics on road deaths and injuries.
Family Violence Statistics - New Zealand Family Violence Clearinghouse	A link to sources of family and sexual violence statistics.



<p>Charities Services Data on NZ Charities</p>	<p>Charities register dashboards, which can be searched by region, or sector, activity, beneficiary and any other information collected by Charities Services.</p>
<p>Salvation Army State of the Nation Report 2024</p>	<p>This interactive dashboard displays the measures from the Salvation Army's State of the Nation Report 2024 with focus areas: Children and Youth, Work and Incomes, Housing, Crime and Punishment, Social Hazards and outcomes for Māori.</p>
<p>Family Services Directory</p>	<p>A national directory of service providers providing support to families.</p>
<p>Data Protection and Use Policy and Procedures for Social Sector organisations</p>	<p>These tools help anyone who works directly with service users to apply the Data Protection and Use Policy (DPUP) in their work.</p>
<p>Pokie Grants Data</p>	<p>Discover whether your community benefits from Gaming Trust grants using this interactive tool.</p>
<p>Here to Help U</p>	<p>Directory of services supporting people in your area.</p>
<p>WBOP Community & Social Sector Organisation Dashboard</p>	<p>Compiled by Community Insights this dashboard is a combination of Charities Services data and SocialLink's own database.</p>